



Focus on Friends

www.friendsofpflugervillecommunitylibrary.org

Volume II Issue 4

P.O. Box 671 Pflugerville, TX 78691-0671

September 2009

Join the Friends

Annual Membership

Individuals

Student	\$5
Individual	\$15
Family	\$30
Supporting	\$60
Patron	\$100
Sponsor	\$500

Business Sponsors

Diamond	\$500
Platinum	\$400
Gold	\$300
Silver	\$200
Bronze	\$100

Friends meet the Third Tuesday of each month at 7 pm at the Pflugerville Library, 102 10th Street.

The next meetings are:
September 15
October 20.

2009 Officers

- Rachel Gonzalez
President
- JoAnne Thornton
Vice-President
- Audrey Dearing
Treasurer
- Pam Stephenson
Secretary

Editor: Pam Stephenson

MITZI MARKESE RECEIVES VOLUNTEER AWARD

Mitzi Markese is the newest recipient of the Library Volunteer Award presented by the Friends of the Pflugerville Community Library.

Mitzi has been a familiar face at the PCL for many years, donating more than 180 hours of her time annually.

“Mitzi provides a valuable service in cleaning and identifying materials in need of repair from the heavily-utilized children’s collection. Her dedication and great sense of humor are assets to our efforts,” said Martha Hartley, Library staff member.

“Helping with cleaning the books and being with the other workers at the Library are my favorite part of volunteering at the Library,” said Markese.

Friends presented Markese with a gift card to Kohls in appreciation of her dedication. Thank you, Mitzi!



Mitzi Markese enjoys volunteering her time at PCL

LIBRARY EXPANSION MOVES FORWARD

During August, the City’s Library Architectural Review Committee heard presentations from finalists from firms vying to conduct the architectural design of the Library expansion.

The Committee is comprised of City Council member, Wayne Cooper; Interim City Manager, Lauri Gillam; Library Director, Kathy Freiheit; Reference Librarian, Jennifer Coffey; Library Board Member, Scott Reed; and Friends representative, Audrey Dearing.

From the 23 firms that submitted Statements of Qualifications, three finalists were invited to make presentations August 20. These included Vitetta, PSA Dewberry and F&S/Smith Group. Each firm was allowed 40 minutes for their presentation followed by questions and answers.

The Committee has submitted their recommendations to the City. Final selection will be determined by the City Council in September.

Pflugerville citizens approved \$7 million in Library Expansion Bonds in May 2008.

Completion is projected for early 2012 for the 33,000 square feet addition.



Perhaps no place in any community is so totally democratic as the town library. The only entrance requirement is interest.

—Lady Bird Johnson

FRIENDS SUPPORT SUMMER READING PROGRAMS

The Library Summer Reading Program themed, "Libraries: Deep in the Heart of Texas" was a huge success, with more than 1000 children participating.

Teens and Tweens submitted 139 book reviews with 82 certificates of participation awarded to local students.

Friends of PCL sponsored several of the special programs/performers during the 2009 Summer Reading Program, totaling almost \$1,200.

Programs sponsored by the Friends included:

June 19, Sue Young;

June 23 Schave & Reilly

July 10 Lucas Miller;

July 14 Mr. Leebot

July 24 Kent Cummins
Magic Show.



FALL BOOK SALE, NOVEMBER 5, 6, 7

Gently used books, DVDs, CDs, audio tapes, audio books are being collected for the next Used Book Sale, scheduled for November 5, 6, and 7.

These items may be dropped at the Pflugerville Library during regular hours.

The **Fall Used Book Sale** will be held at the Library Thursday, November 5, 2—8 pm; Friday, Nov 6, 10 am—6 pm and Saturday, Nov 7, 10 am—2:00 pm.

All proceeds from the sale directly benefit the Library.

**Your donation is
tax deductible.**

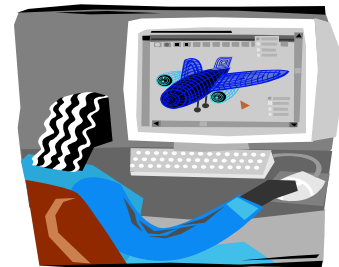
**A library is not a luxury
but one of the necessities
of life.**

— Henry Ward Beecher

ART/GRAPHICS VOLUNTEER NEEDED

Are you creative and skilled at designing web sites and displays? The Friends is looking for a volunteer(s) to help design a display case at the Library and a re-design of our website. This is a great opportunity for high school students to gain community experience.

If you have this expertise and can volunteer your time, please contact us by email at friendspcl@yahoo.com



HAVE YOU RENEWED YOUR MEMBERSHIP ?

How your membership in the Friends works for the community:

- Supports quality library service in the community through fund-raising and volunteerism
- Conducts fund-raising that complements the library's mission
- Provides funding for collection development, programming and special library projects
- Networks with others who value the benefits of public libraries

Friends of PCL is now accepting new members. Pick up a brochure/ application at the Library or visit our website for more information. www.friendsofpflugervillecommunitylibrary.org